

Steps needed to setup YouTube for Schools

1. Unblock Gmail and youtube access allow teachers access to create YouTube usernames accounts.

Remove YouTube domain blocks Ensure the following top-level domains are not blocked:

- youtube.com
 - yting.com
2. Get a gmail account for teachers and admins only, you need this to login to Youtube and show special or blocked videos.
 3. Sign up for a “YouTube for Schools” account (only admins will do this or school districts) a Unique School ID is needed in filter.
 4. Login to youtube and setup a usernames for access and playlists if needed.

Enable YouTube for Schools with WF v.5.0.20----details

To receive a Unique School ID and use the new feature on the filter, please use the link below and signup for YouTube for Schools Unique School ID, this must be done before enabling the YouTube for schools feature, otherwise all users will not be able to login and setup unrestricted channels.

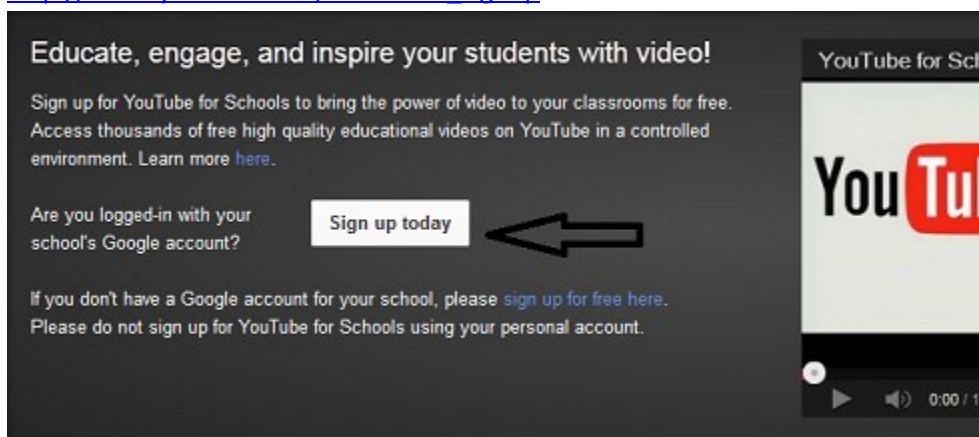
What is the difference between YouTube EDU, YouTube for Schools, and YouTube.com/Teachers?

[YouTube EDU](#) is a sub-section of YouTube that contains high-quality educational content. [YouTube for Schools](#) is a network setting that, when implemented, allows your school to access the educational content on YouTube EDU while limiting access to non-educational content on YouTube.com. [YouTube.com/Teachers](#) is a how-to site that shows you how to use YouTube in the classroom.

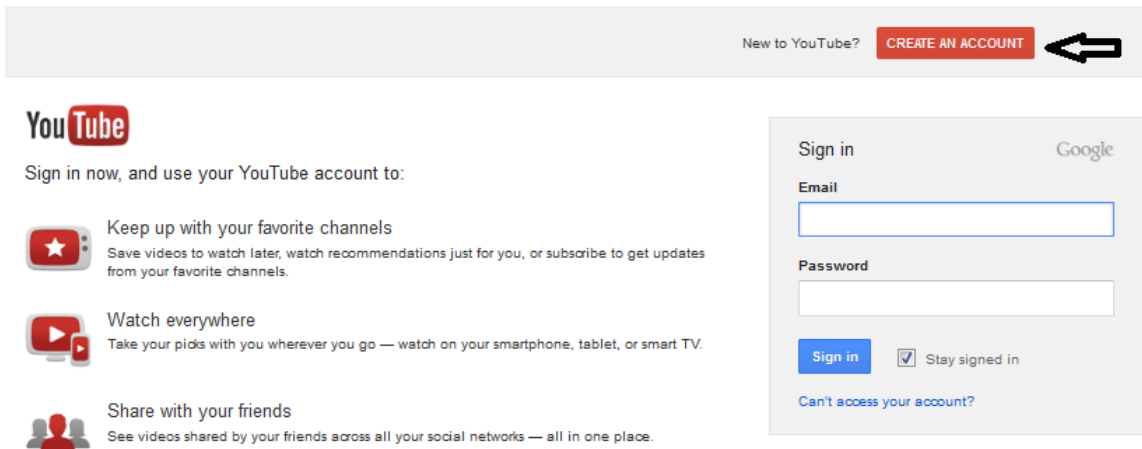
Symptoms if the YouTube Unique School ID is in place: When you click on login on youtube.com, the browser loops back to youtube.com/education, this means your admin needs to add your username to a list on the YouTube admin portal.

Steps for Admin only:

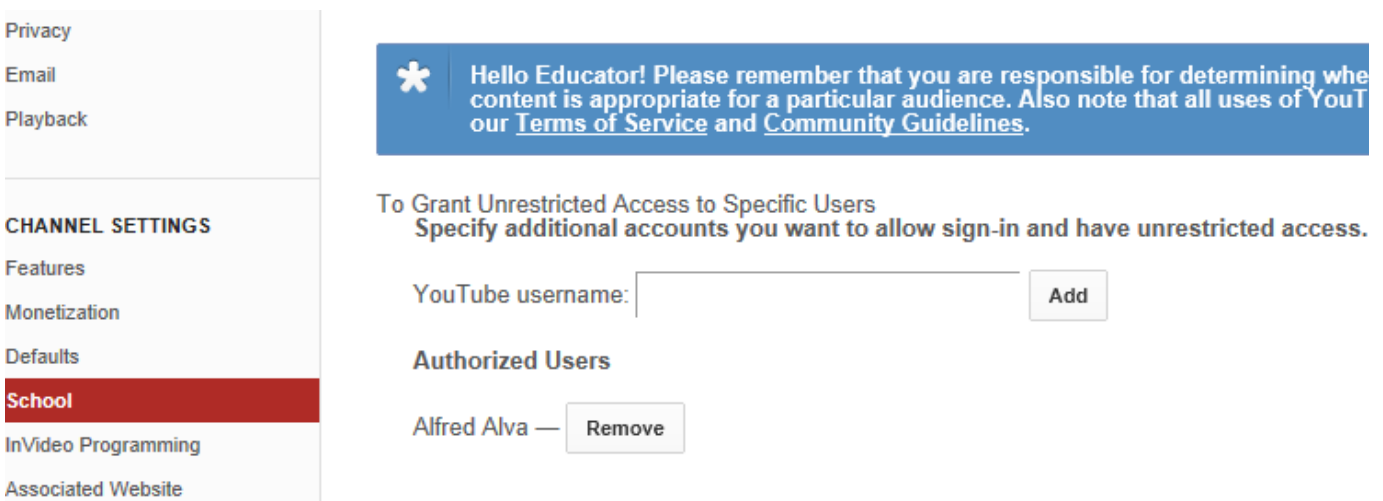
1. Signup for a google account if unblocked by your school or business. <https://accounts.google.com/b/0/AddMailService>
2. You cannot signup and get a **Unique School ID** without a gmail account.
3. Signup for YouTube for Schools as a school or business entity, both can get a **Unique School ID**.
http://www.youtube.com/education_signup



- Steps for teachers and admins who will need youtube usernames:
- Get a **YouTube username by clicking on the red create an account button shown below.**



- Important:** (google username and YouTube username are **not** the same to use channels on YouTube). Login to youtube and create a playlist to allow more access to YouTube. configure user names to allow more access. Do not use **google usernames or email aliases for this.** **To configure usernames, use the section below, you need a YouTube for schools account first to login to youtube then select “YouTube settings” located by your login name. Click on “school” as shown and see this section below.**



- For teachers:** you must create their usernames and a channel to have your students able to see your special channel videos and have your admin add you to his authorized users list.

Filter setup: See Below

In the filter, each profile can use a different Unique School ID for different schools if you have many school districts or have remote offices.

NOTE: When you get your Unique School ID, do not paste the whole thing in the field just the part as shown below:



Two ways to use one Unique School ID:

1. Add the Unique School ID to a global group profile and then go to other profiles and inherit global for all like the screen shot below
2. Or have a school district, or any user create their own YouTube for schools account and add that Unique School ID for special profiles like teachers and admins.

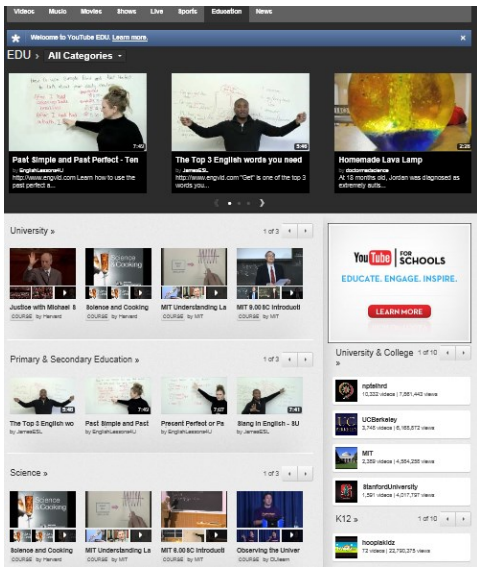
The first screenshot shows the 'Global Group' configuration page for 'YouTube Video Control'. The 'Global Group section' is highlighted with an upward arrow. The 'Enable YouTube for Schools' radio button is selected, and a 'Unique School ID' text box is visible. The 'Passkey(s)' field is empty.

The second screenshot shows the 'IP Group' configuration page for 'Alfred'. The 'IPgroup or LDAP section' is highlighted with an upward arrow. The 'Inherit Global Group settings' radio button is selected. A message states 'YouTube Video Control is currently disabled'. Below this, there are three radio button options: 'Disable YouTube Video Control for this profile', 'Use specific YouTube for Schools ID', and 'Use specific VuSafe Passkey(s)'. The 'Unique School ID' text box is present. The 'Passkey(s)' field is empty. A note at the bottom reads 'its one or the other not both, Vsafe or Youtube'.

Allow at least 5 minutes to synchronize the YouTube for Schools after applying the unique ID.

How do I test?

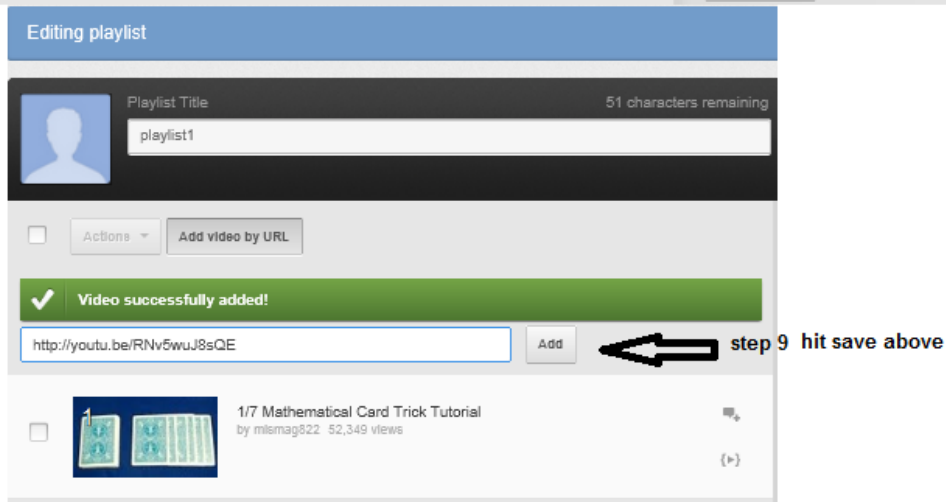
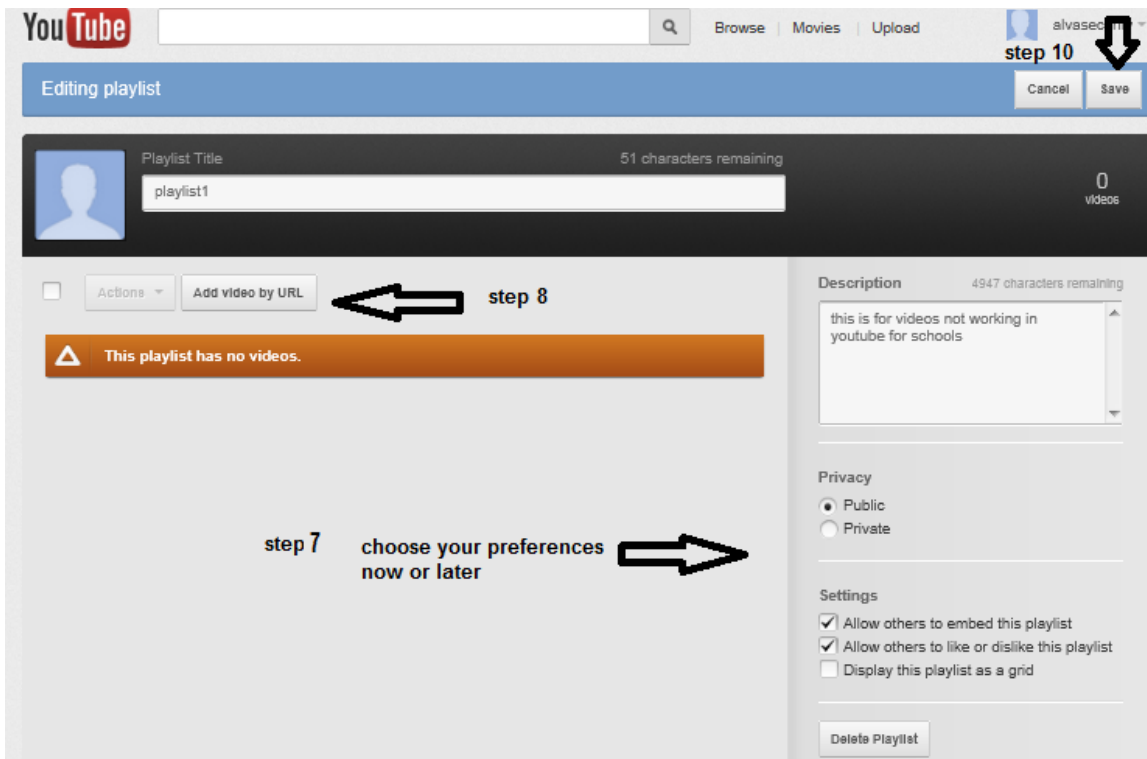
Type <http://www.youtube.com> and the filter will re-redirect the browser to <http://www.youtube.com/education>. See something similar like the screen shot below:



Create a play list to show allowed or blocked videos:

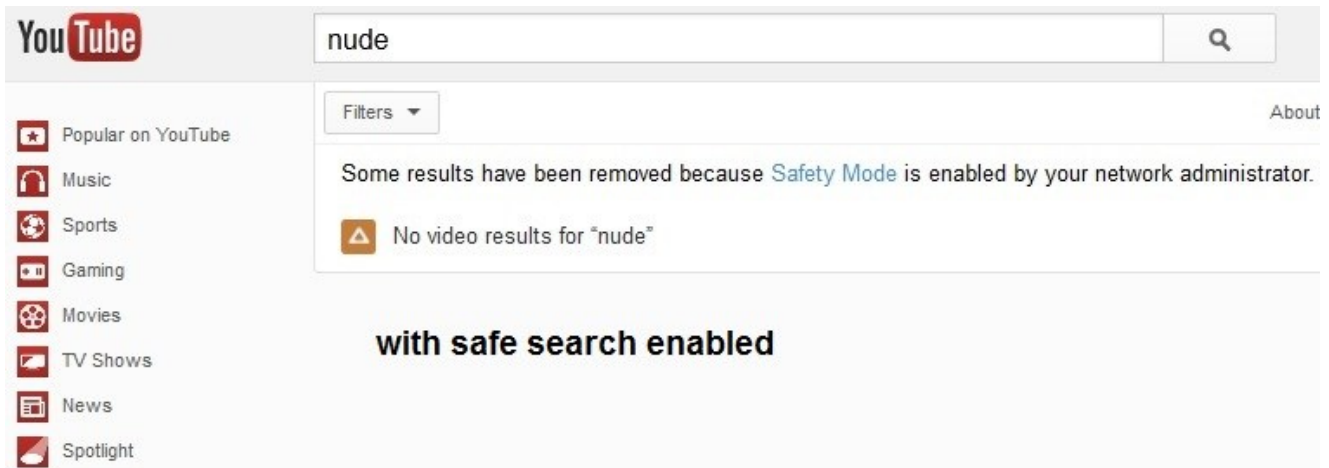
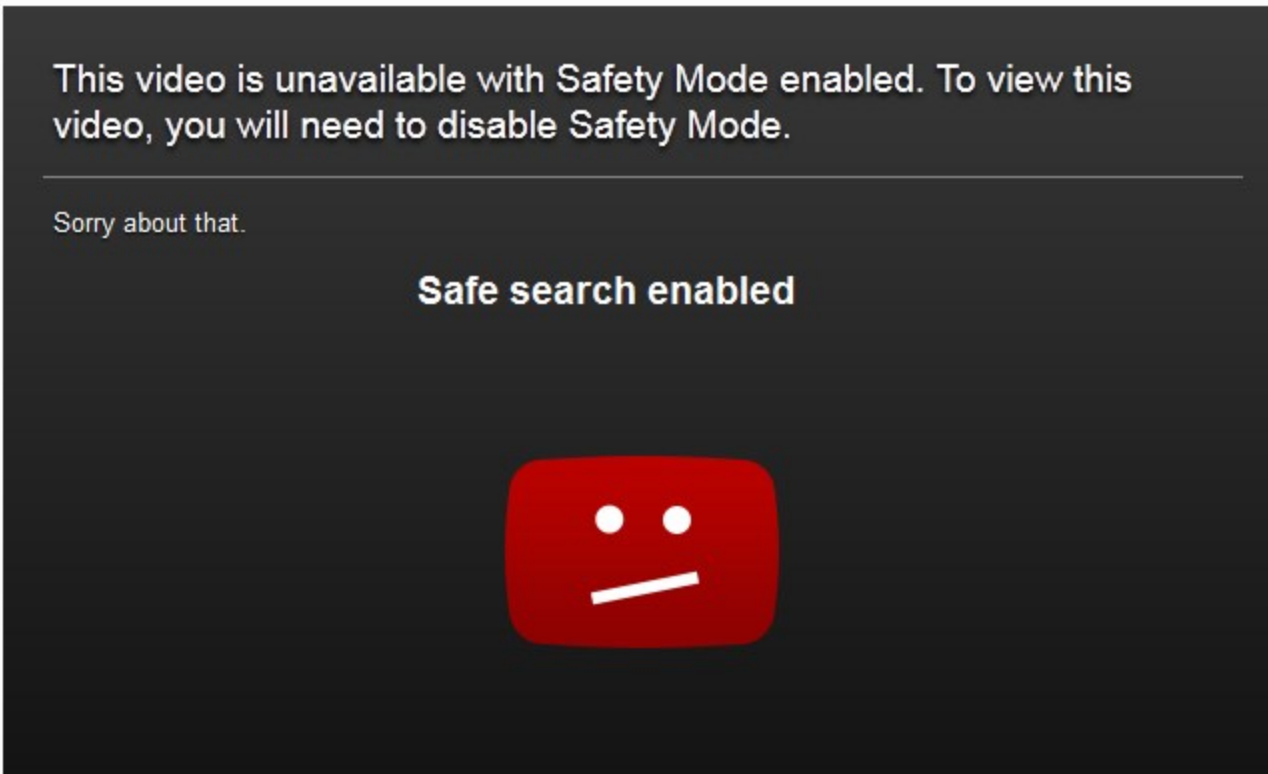
A screenshot of the YouTube interface showing the process of creating a playlist. The interface includes the YouTube logo, a search bar, and navigation links for 'Browse', 'Movies', and 'Upload'. The user's account name 'alvasecurity' is visible in the top right corner. The main content area shows the 'Video Manager' tab selected, with a 'Playlists' section containing a 'New playlist' button. A modal dialog box is open for creating a new playlist, with fields for 'Playlist title' (containing 'playlist1') and 'Playlist description' (containing 'this is for videos not working in youtube for schools'). The 'Create playlist' button is highlighted. Numbered arrows indicate the following steps: step 1 points to the user's profile name; step 2 points to the 'Settings' link in the user menu; step 3 points to the 'Upload' button; step 4 points to the 'Playlists' link in the left sidebar; step 5 points to the 'New playlist' button; and step 6 points to the 'Create playlist' button in the modal dialog.

More steps below



You should now be able to view your selected play lists.

YouTube block pages, relating to filtering configurations:



The image below is not a filter configuration but a youtube playlist needed:

